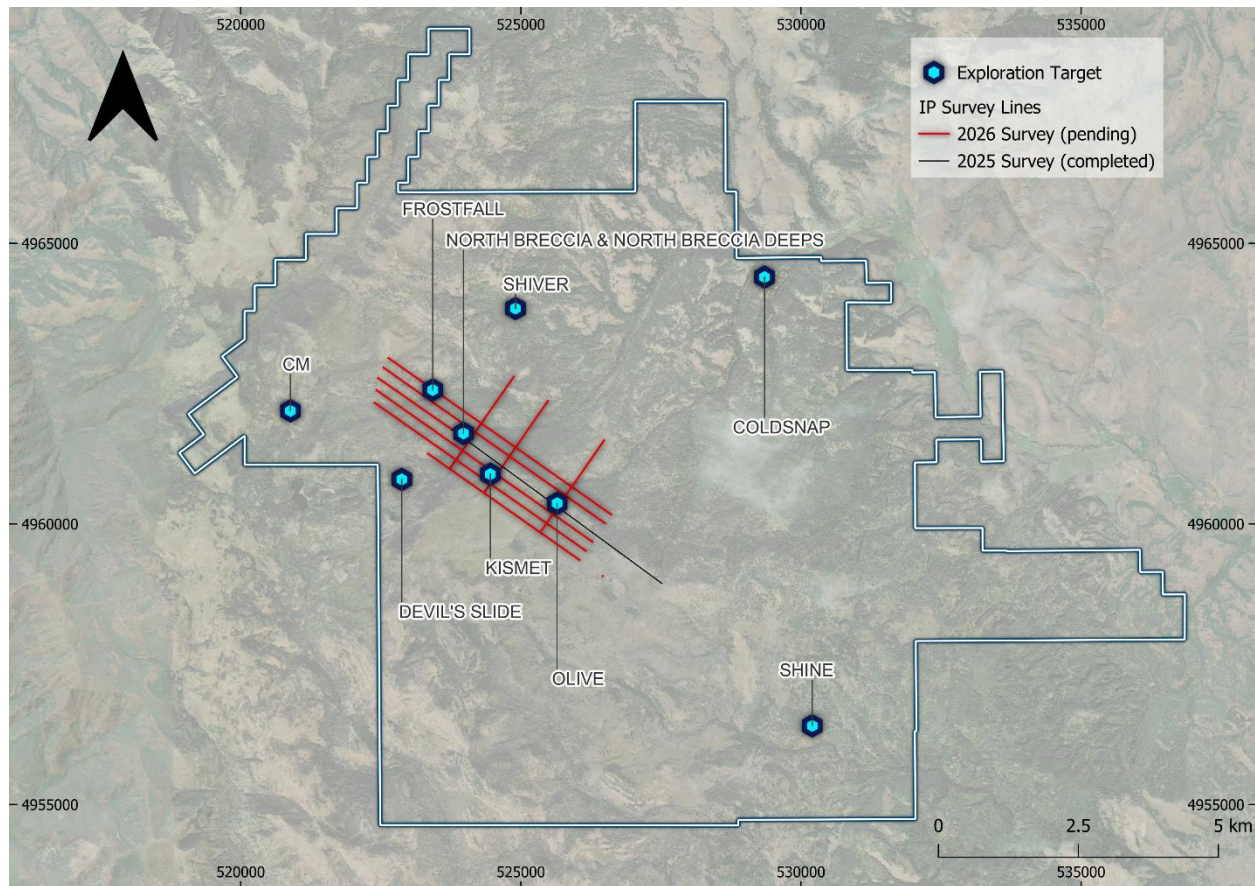


## IDEX Metals Commences 2026 Exploration Season at Freeze Property with IP Survey over Kismet Corridor

**Vancouver, B.C., April 8<sup>th</sup>, 2026:** IDEX Metals Corp. (“IDEX” or the “Company”) (TSXV: **IDEX**; OTCQB: **IDXMF**) is pleased to announce the commencement of an Induced Polarization (“IP”) geophysical survey over the Kismet-North Breccia-Frostfall targets (“Kismet Corridor”) at its Freeze Property (“Freeze” or the “Property”), formally kicking off the Company’s 2026 exploration season. The survey is designed to define near-surface structures and alteration zones, providing high-resolution targeting data ahead of a planned drill program slated to begin in May 2026.

Clayton Fisher, CEO of IDEX Metals, commented: *“The IP survey marks the opening of what we expect will be an exciting and very active 2026 exploration season. The Kismet Corridor has demonstrated compelling geological and geochemical characteristics that warrant a full-fledged geophysical investigation. By completing this survey first, we will be able to further derisk these targets and fine-tune our 2026 drill campaign with increased confidence. We anticipate mobilization of this season’s drill rig to occur following completion of the IP survey and receipt of the initial data.”*

**Figure 1.** Summary of completed and planned IP survey grid



### 2026 IP Program

The Company has engaged TMC Geophysics Ltd. to conduct a 37 line-kilometre IP geophysical survey over the Property, with primary coverage focused around the Kismet Corridor target area. The program is comprised of multiple survey lines in a NW-SE orientation, to best resolve the geometry, continuity, and depth of mineralization between the Kismet, North Breccia and Frostfall targets. The IP program will provide complete and systematic coverage of the Kismet Corridor's full strike length, while also capturing flanking ground to ensure that no significant anomalies are missed along the margins of the magmatic-hydrothermal system.

The expanded 2026 IP survey builds directly on geophysical and geochemical work completed during the 2025 exploration season. Previous IP and magnetotelluric (“**MT**”) data acquired across Freeze in 2025 identified a large, conductive body directly beneath the North Breccia. This conductive body sits directly below the molybdenum and tellurium core defined by the 2025 soil geochemistry survey; the two datasets together represent a strong vector towards the mineralized source (see [March 25<sup>th</sup> news release](#)). The 2026 IP survey will provide the additional resolution and spatial coverage required to finalize drill collar locations and maximize the effectiveness of the 2026 drill program.

Results from the IP survey will be processed, inverted, and integrated with existing surface geological mapping, soil geochemistry, and 2025 drill results to generate a refined geological model of the Kismet Corridor. This data will directly inform the 2026 exploration program, allowing IDEX to target mineralization at the North Breccia & Kismet targets with increased precision when drilling commences.

Following completion of the IP survey, IDEX's 2026 exploration program at Freeze will advance on two concurrent fronts beginning in May: a Phase II drill program targeting the North Breccia porphyry target, and a comprehensive surface exploration campaign encompassing soil sampling, rock sampling, and geological mapping across the broader Freeze Property.

### **2026 Drill Program**

The 2026 drill program will be initiated immediately following completion and interpretation of the 37 line-kilometre IP survey, with drilling expected to commence in May 2026. Drilling will target the buried intrusive centre interpreted beneath the North Breccia and Kismet targets, where soil geochemistry, geophysics, and 2025 drilling (notably, hole KSMT25006), have collectively outlined the highest-priority target on the Property. The program is designed to test the pyrite-rich sulphide shell intersected in 2025 and expand into the interpreted core of a copper-molybdenum porphyry system associated with the molybdenum-tellurium geochemical anomaly, in addition to measuring grade continuity and depth of mineralization beneath the North Breccia.

### **2026 Surface Exploration Campaign**

IDEX will also conduct a focused surface exploration campaign across the Freeze Property, concurrent with drilling, beginning in May 2026. The program will encompass expanded soil geochemistry, targeted rock sampling, and geological mapping across priority target areas including Frostfall, Devils Slide, Shiver, Shine, Coldsnap and Olive

Creek. This work will further develop the Company's understanding of priority exploration targets and improve the general geological model of the Freeze Property and the broader Idaho Copper Belt.

### **Qualified Person**

The scientific and technical information in this news release has been reviewed and approved for disclosure by David Hladky, P.Geol. (registered in Alberta), V.P. Exploration of IDEX Metals Corp. David Hladky is a "Qualified Person" for IDEX Metals Corp. within the meaning of National Instrument 43-101 - Standards of Disclosure for Mineral Projects.

### **About IDEX Metals Corp.**

IDEX Metals Corp. is a mineral exploration company focused on advancing a portfolio of base and precious metal projects in Idaho, USA. IDEX is primarily focused on the exploration and development of the Freeze Copper-Gold porphyry prospect located in the newly discovered Idaho Copper Belt, Washington County, Idaho. With a strategic land position in a great mining jurisdiction and surrounded by major industry players, IDEX is committed to redefining district-scale exploration in Idaho.

For more information, please visit <https://idexmetals.com/>

### **ON BEHALF OF THE BOARD OF DIRECTORS**

Clayton Fisher, CEO & Director

### **For further information regarding IDEX contact:**

Investor Relations

[info@idexmetals.com](mailto:info@idexmetals.com)

1 (604) 260-0356

### **Cautionary Note Regarding Forward-Looking Statements**

Statements contained in this news release that are not historical facts may be forward-looking statements. These forward-looking statements involve risks, uncertainties and other factors that could cause actual results to differ materially from those expressed or implied by such forward-looking statements. In addition, the forward-looking statements require management to make assumptions and are subject to inherent risks and uncertainties. There is significant risk that the forward-looking statements will not prove to be accurate, that the management's assumptions may not be correct and that actual results may differ materially from such forward-looking statements. Accordingly, readers should not place undue reliance on the forward-looking statements. Generally forward-looking statements can be identified by the use of terminology such as "anticipate",

“will”, “expect”, “may”, “continue”, “could”, “estimate”, “forecast”, “plan”, “potential” and similar expressions. These forward-looking statements are based on a number of assumptions which may prove to be incorrect which, without limiting the generality of the following, include: risks inherent in exploration activities; the impact of exploration competition; unexpected geological or hydrological conditions; changes in government regulations and policies, including trade laws and policies; failure to obtain necessary permits and approvals from government authorities; volatility and sensitivity to market prices; volatility and sensitivity to capital market fluctuations; the ability to raise funds through private or public equity financings; environmental and safety risks including increased regulatory burdens; weather and other natural phenomena; and other exploration, development, operating, financial market and regulatory risks. The forward-looking statements contained in this press release are made as of the date hereof or the dates specifically referenced in this press release, where applicable. Except as required by applicable securities laws and regulation, IDEX disclaims any intention or obligation to update or revise any forward-looking statement, whether as a result of new information, future events or otherwise, except as required by applicable securities laws. All forward-looking statements contained in this press release are expressly qualified by this cautionary statement.

*Neither the TSX Venture Exchange nor its Regulation Services Provider (as that term is defined in the policies of the TSX Venture Exchange) accepts responsibility for the adequacy or accuracy of this release.*